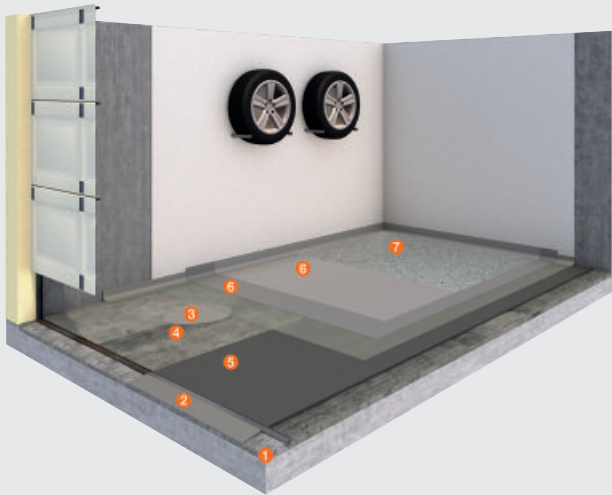


System Garage refurbishment

PCI system solutions for refurbishing and improving the appearance of old garages



Brief description:

PCI system solutions for floor refurbishment

Garages are continually subject to extreme stress. Not only mechanical loads, with high point loads caused by vehicles entering and leaving, but also heat, frost, water, moisture, deicing salt and oil deposits attack the structure of the floor surface over the course of time. As a result of the wide variety of stresses, the screed or the exposed concrete floor releases sand; chips and holes appear in the concrete. Refurbishment then becomes essential. This damage can be fully repaired and avoided in the long term.

System benefits:

- Value maintenance
- Prevention of damage
- Durable refurbishment

Worksteps	Products
Primer	1 PCI Epoxigrund 390 Special primer on absorbent and non-absorbent substrates
Floor/wall leveler	2 PCI Aposan [®] Heavy duty repair mortar for small concrete areas, corners, joints and edges or PCI Nanocret [®] R4 PCC Heavy-duty repair mortar for concrete structures on floors, walls and overhead application
Repair mortar	3 PCI Repafast [®] Fluid Flowable repair mortar for traffic areas and industrial floors
optionally floor leveler	4 PCI Gisogrund [®] 404 Wash primer for absorbent and non-absorbent substrates
	5 PCI Zemtec [®] 1K Cement based floor leveler for residential and commercial buildings
Floor coating	6 PCI Supracolor Polyurethane sealing for cement-based floors and synthetic resin floors
Top sealing	7 PCI Finopur [®] 2K PUR sealing matt top coat on synthetic resin coatings PCI Farbchips 05 Polymer-modified colored chips to be scattered on floor coatings

Replacement of threshold screed rail

Insertion of screed rail

The new rail is fixed in place using dowels for perfect seating.

Grouting of screed rail

The rail is grouted using PCI Repafast® Fluid flowable repair mortar.

Leveling of screed rail

Deeper holes are filled using PCI Nanocret® R4 PCC or PCI Aposan®. The threshold area is leveled.



A screed rail is grouted using a flowable mortar

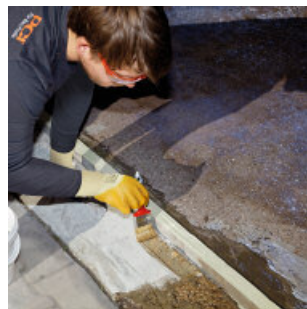


Alternatively, the area may be leveled using reaction resin mortar

Refurbishment of threshold areas in garages



Damaged screed rail



Grind the threshold to obtain a smooth surface and apply PCI Epoxigrund® 390 primer



Apply PCI Aposan® reaction resin mortar to the fresh primer



Finally, smooth the mortar

Application of primer

In the transitional area at the threshold of the garage door, PCI Epoxigrund 390 primer consolidates the substrate intensively, ensuring secure adhesion for repair mortars. Please wear appropriate work and protective clothing when working with epoxy resins.

Leveling of threshold

An inclined ramp produced using PCI Aposan® or PCI Nanocret® R4 PCC protects the screed rail against impact. These products can be used for compensating level differences up to 50 mm. PCI Aposan® heavy-duty repair mortar is suitable for areas subject to severe loads, even in layers as thin as 2 mm.

Floor leveling – preparation of substrate

Grinding the floor

Old residues and foreign matter that could impair adhesion must be removed by grinding with a disk sander. This significantly improves the absorption of the primer. If the floor is severely contaminated by oil, it will need to be milled down or treated using PCI Entöler.

Corners and connections

A concrete grinder must be used for work on inaccessible areas such as corners.

Vacuuuming

The floor must then be cleaned using an industrial vacuum cleaner.

Priming

Two coats of PCI Gisogrund® 404 (applied cross-wise) ensure good adhesion of the leveling compound to the substrate. The violet coloring of the product means that it is easy to see which areas have already been covered. The primer is diluted with water depending on the substrate.



Grinding the floor



Corners and connections



Vacuum cleaning



Priming

Floor leveling – cementitious leveling compound



Preparation of the floor leveling compound



Stirring without lumps

PCI Zemtec® 1K is the ideal floor leveling compound for perfect results:

- Self-leveling
- Can be used directly in indoor areas
- Fiber-reinforced
- High abrasion resistance
- Suitable for use by vehicles with pneumatic and solid rubber tires

Stirring without lumps

Stir the product with a suitable agitator or mixer (basket mixer) for at least three minutes until there are no lumps in the mixture. Allow mixed PCI Zemtec® 1K to stand for about three minutes and then stir it again for a short time.

Distribution of leveling compound

Distribute the leveling compound evenly on the primed surface. It is recommended to use a pin leveler.

De-aeration

The cementitious floor leveling compound should be de-aerated using a spiked roller. This process removes air bubbles from the leveling compound and creates a homogeneous surface.



Distribution of leveling compound



De-aeration

Floor coating – surface protection

Installation of concave moulding

Use PCI Nanocret® R4 PCC to make a concave moulding for the wall connection.

Priming

Before the colored sealing compound is applied, the surface must be primed using the solvent-free, very-low-emission primer PCI Epoxigrund 390. Please wear appropriate work and protective clothing when working with epoxy resins.

Surface sealing

The technical process of refurbishment has been completed when two coats of PCI Supracolor have been applied. The floor is durably protected, has anti-slip properties (anti-slip class R 10) and will not be affected by aging. In addition, the coating resists attack by plasticizers.



Installation of concave moulding



Priming



Surface sealing

Colors



7030 Stone grey



7032 Pebble grey

Surface sealing – improving the appearance of garage floors



Improved appearance



Surface sealing

Improving the appearance of a floor

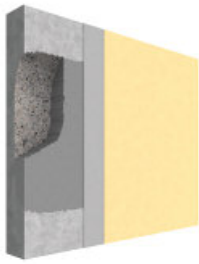
Directly after the application of the second coat of PCI Supracolor, PCI colored chips may be scattered on the coating before it has dried to provide an optical highlight.

Surface sealing

PCI Finopur® seals a decorative surface to protect against light and provides a silky matt finish. The surface resists wear and water and is easier to clean. The overall appearance of the garage is improved.

Overview of Construction Systems

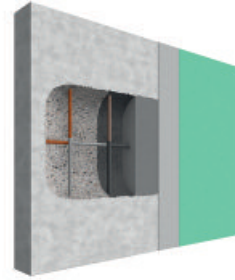
System for Concrete and
Masonry Refurbishment



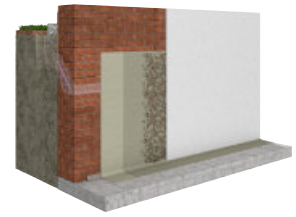
System for Concrete
Repair



System for Structural
Repair (PCC)



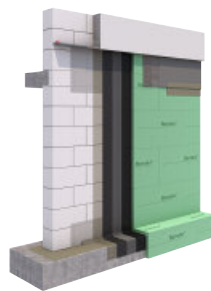
System Barra



System Barraseal Turbo



System Pecimor



System BT 21



System for Double-Leaf
Brickwork



www.pci-augsburg.de

The specifications in the valid technical data sheets are to be followed for the use of the PCI products mentioned.

System Garage refurbishment, edition September 2020 (German edition May 2020)
Any subsequent publication supersedes this edition; the latest edition is always available on the Internet under www.pci-augsburg.de



PCI Augsburg GmbH

Piccardstr. 11
86159 Augsburg
P.O.B. 10 22 47
86012 Augsburg
Germany

Tel. +49 (821) 59 01-0
Fax +49 (821) 59 01-372
www.pci-augsburg.de



zertifiziertes Qualitäts-
managementsystem